



BUENOS AIRES

Un tango criollo (1903)

AG. VILLALDO (1861, 1919)

Uno de los pioneros del TANGO!

IMPROVISA SOBRE

LA BASE RÍTMICA Y ARMÓNICA

Rem

Rem

LaM

La7

Rem



HOMENAJE AL ARREGLO DE ROLAND DYENS

Compara las armaduras de la introducción y la sección A. ¿Qué sucede y por qué?

INTRO Deciso



6 = RE + SIEMPRE PIZZ





# LOS CAMBIOS de HUMOR en el TANGO

El tango se caracteriza por cambios muy bruscos en lo que respecta a su carácter y expresividad. Pinta tu voz con colores diferentes según el estado anímico de cada momento... ¡y que se note al tocarla!

Musical score for the first system (measures 1-14). It consists of three staves: a vocal line with notes and slurs, a piano accompaniment with chords and fingerings, and a bass line with notes and a 'gliss' marking. Dynamics include 'mp' and 'f'. A question mark '?' is written in the lower right of the system.

Musical score for the second system (measures 15-18). It consists of three staves. The piano accompaniment features a 'cresc.' (crescendo) marking above the staff. Dynamics include 'mp' and 'f'. Measure numbers 15, 16, 17, and 18 are indicated.



Musical score for the third system (measures 19-22). It consists of three staves. The piano accompaniment has a 'FINE' marking above the staff and ends with a double bar line. Dynamics include 'f'. Measure numbers 19, 20, 21, and 22 are indicated.





**B** (D0<sub>7</sub>) ↓ ↓ ↓ ↓ ↑ (FaM)

26

*p*

3 > 1 >

Handwritten musical score for system B, featuring three staves with notes, rests, and various annotations including fingerings and dynamics.

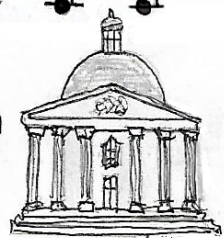
*i mi a i mi i*

30A (LaM) 30B

*f*

Handwritten musical score for system C, continuing the piece with similar notation and including the vocal line *i mi a i mi i*.

BUENOS AIRES,  
Una curiosa mezcla  
de estilos arquitectónicos



1. ART NOUVEAU
2. NEOCLÁSICOS
3. ART DECO
4. HAUSSMANN

**C**

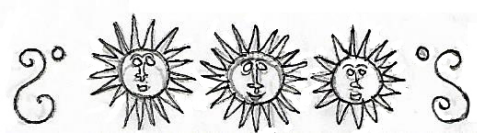
Dis(MI) Pista: 2ª Posición (LA<sub>7</sub>)

*f* *p* *mp*

SILBAR

(tapa)

Handwritten musical score for system D, including a guitar solo section with a 'SILBAR' (silence) instruction and a 'tapa' (mute) instruction.

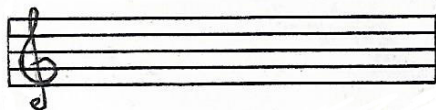


**ANALIZA → IMPROVISA**

Completa el análisis armónico del tango y utiliza las escalas correspondientes para improvisar sobre los acordes. ¡Cuidado con las dominantes secundarias!

**(A)**  
¿Quién fue "El Choclo"?  
¡INVESTIGALO!

TONO/ESCALA



LOS ACORDES  
¡completalos!



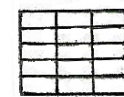
Re m



LaM(7)



Re7

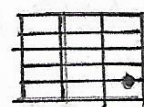
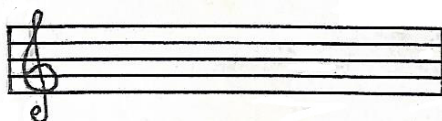


Sol m

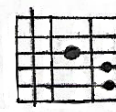
**(B)**

ARGENTINA

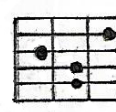
TONO/ESCALA



DoM



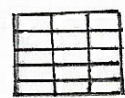
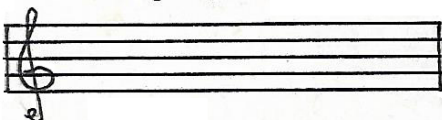
FaM



Mi7

**(C)**

TONO/ESCALA



1 ReM



2 Si7



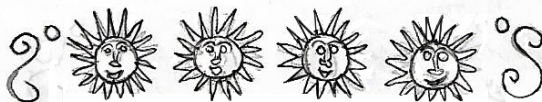
Mi m (M)

SITÚA:

- LA PATAGONIA
- BUENOS AIRES
- LAS MALVINAS



OCTUBRE  
MAYLOS 2019



(M)